



Ball Transfer Unit A7122-16

Ball Units Series A7 - Wheel S/3

 -30 °C - +100 °C

 swivels easily

 wear resistant

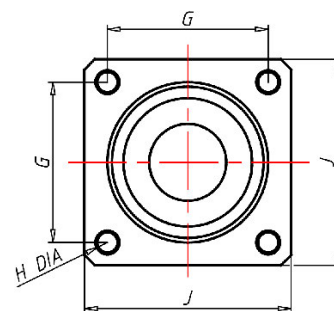
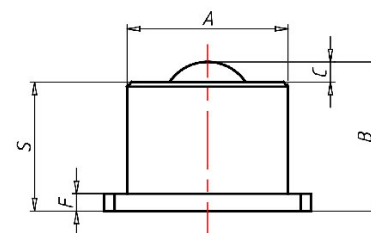
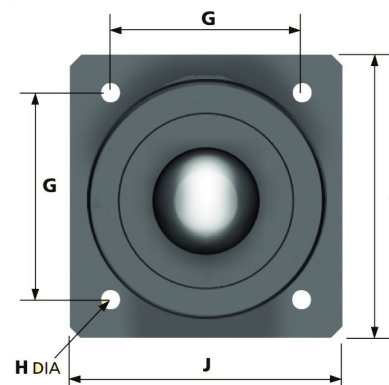
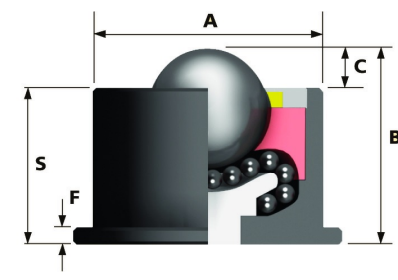
 shock proof

 floor protective

 weather proof

Wheel

Ball: carbon steel or stainless steel

Units are machined using CNC machines
from one piece of steelHevi-Load units run on the re-circulating ball principle
The load ball rotates on a hardened bed of small balls

Ball Transfer Unit

Series: 3

Ball-Ø mm: 25,4

Finish housing: steel

Finish Balls: stainless steel

Load Capacity kg: 135

Load capacity tested according to EN 12530 and EN 12527

A mm: 44,5

B mm: 41,4

C mm: 5,6

F mm: 4,8

G mm: 44,5

H mm: 5,6

J mm: 57,2

S mm: 35,8

Advantages

- ✓ Casing made of solid steel on the lathe
- ✓ units run on the re-circulating ball principle
- ✓ The load ball rotates on a hardened bed of small balls
- ✓ plate with four fixing holes

©Copyright 2024 Rollenbau GmbH, www.rollenbau.at 08.05.2024

Applications

- Haulage way
- Assembly lines